

## TDR Seat Rails for Racing Seats

Year: 1990-2005 Mazda Miata

Part Numbers: TDR-SR-DS, TDR-SR-PS, and TDR-SR-DSL



Thank you for purchasing the Track Dog Racing Seat Rail. This custom made seat rail bolts to the factory seat mounting location for simplicity and is a fixed rail to provide the lowest possible seat mounting. You will notice we included all the necessary hardware to mount a bottom mount race seat to the seat rail.

### Tools Needed

Socket Wrench	12mm and 14mm Sockets	14mm Wrench (DSL only)
Power Drill	M8 or 5/16" Drill Bit	M10 or 3/8" Drill Bit (DSL only)
Marker or Scribing Tool	Center Punch	5/16" or 3/8" Spot Weld Drill Bit (DSL only)



**Step 1:** Mount the seat rail(s) to the factory location using the supplied slightly longer M10-1.25 x 25 mm bolts. If you purchased the driver side low rail, you will need to drill out the spot welds of the factory rear mounts and drill holes for the rear mounts. Large fender washers are included to mount under the car for the rear mounts.

If you do not have the driver's side LOW rail, skip to **Step 2** Now

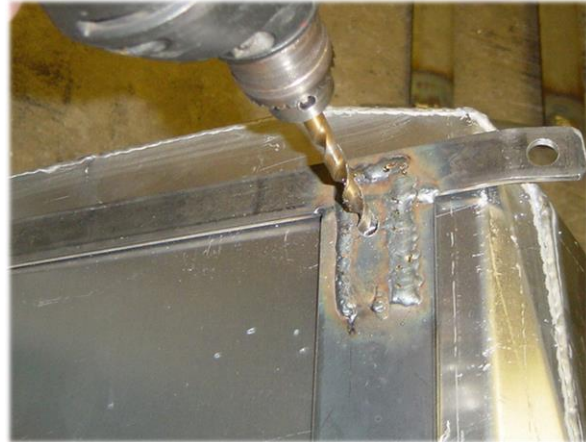
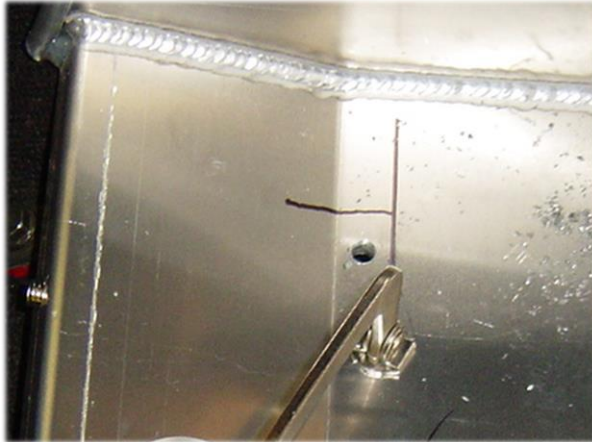
### **Driver's Side Low Instructions**

**Step 1-A:** Drill out the spot welds of the rear seat mounts with a 5/16 or 3/8" Spot Weld Drill bit and remove them. A center punch will keep the bit from slipping.

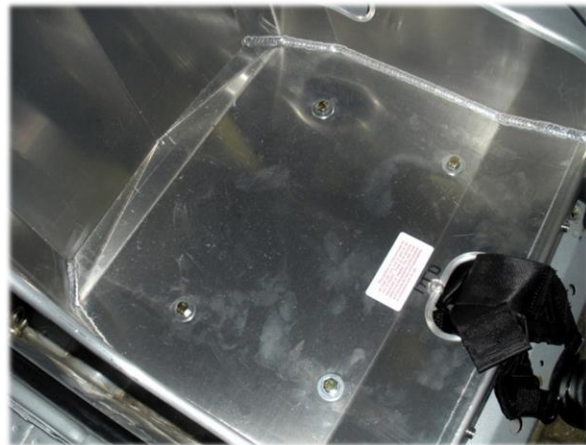
**Step 1-B:** Lay seat rail in and bolt down front of the seat rail with the supplied M10-1.25 x 25mm bolts. Mark rear holes with marker or scribing tool. Remove seat rail and drill holes through floor pan where you marked with M10 or 3/8" drill bit. Again, center punch where you want to drill to keep the bit centered.

**Step 1-C:** Bolt in seat rail again and used the supplied M10-1.25 x 50mm bolts, in the rear. Place the large fender washers and nuts under the car to fasten the rear.

**Step 2:** Place seat in car and have driver sit in the seat with any padding the seat has installed. Align the seat to the preferred location, making sure the edge of the seat is even with the seat rail and door sill. Once you have the seat position in the desired location, have a helper run one of the seat bolts up through the bottom of the seat rail until it contacts the bottom of the seat. The helper should do some back and forth motions on the bolt to create a scratch on the bottom of the seat to mark it.



**Step 3:** Remove the seat and rail. Use a center punch on your marks to keep the bit from slipping. Drill a hole in the bottom of the seat where your mark is. Bolt the seat to the rail. Line the rail and seat up so everything is square. Mark your other three holes with a marker or scribe.



**Step 4:** Center punch your marks and then drill the other three holes in the bottom of the seat. Bolt rail back into the car. Bolt seat to rail from top using supplied bolts and lock washers and washers.

**NOTE:** For passenger side, position seat as far back as you can to provide maximum leg room while considering clearance for any roll bar with passenger's head.





We hope you will be pleased with our product. If at any time you need assistance please feel free to contact us at 214-340-9797 or email us at [support@trackdogracing.com](mailto:support@trackdogracing.com).

If you have any comments or suggestions, please let us know. We also have other unique and high performance products for your Miata. Please visit us at [www.trackdogracing.com](http://www.trackdogracing.com).

We appreciate your business,

The Track Dog Racing Team  
[www.trackdogracing.com](http://www.trackdogracing.com)

**WARNING:** This article is sold without warranty, expressed or implied. No warranty is made to this product's ability to protect the user from any injury or death. The user assumes that risk.